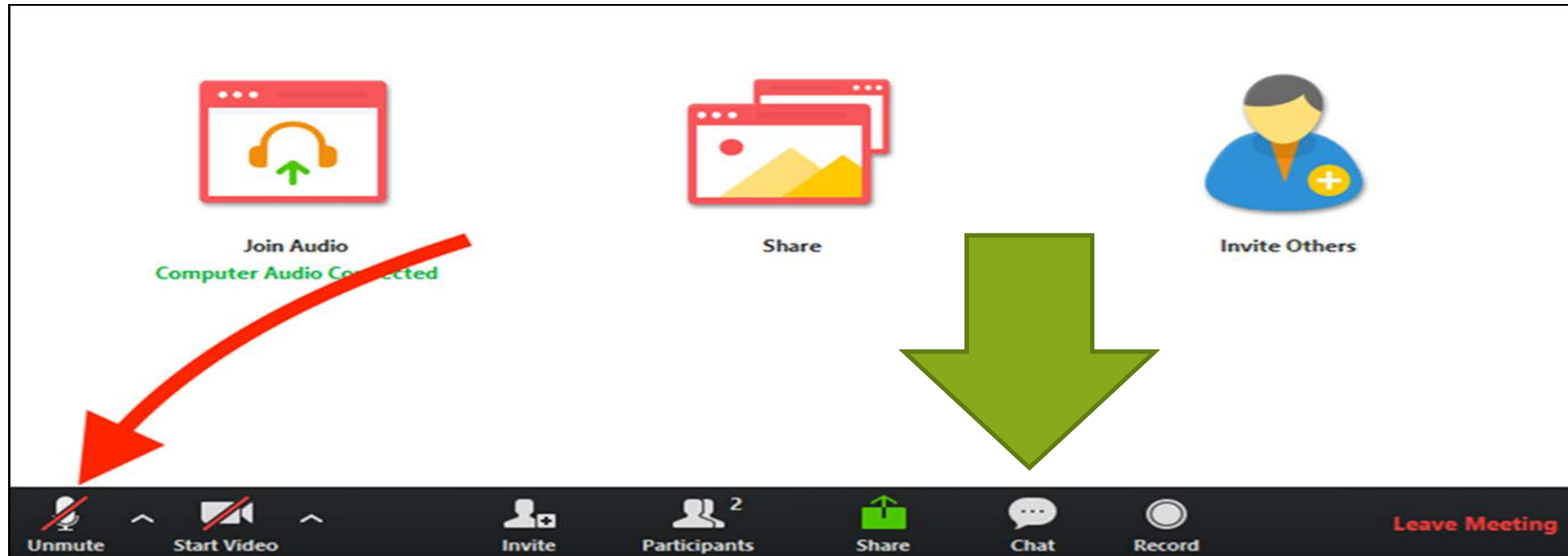
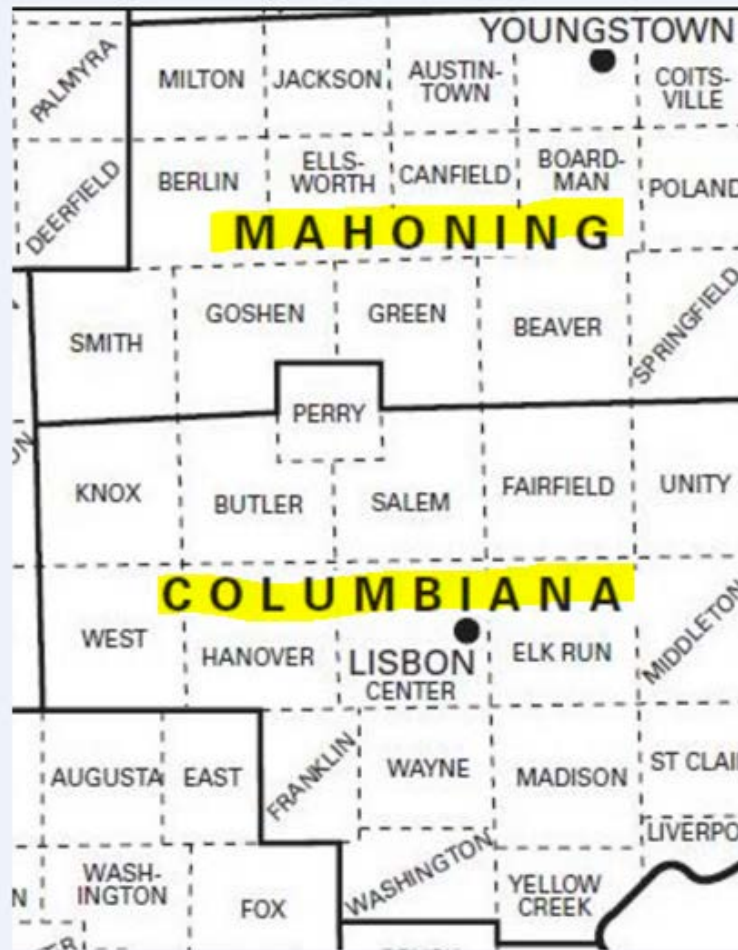


# Welcome to the ACCESS Assembly Meeting

- PLEASE OPEN YOUR CHAT WINDOW AND SEND YOUR NAME AND DISTRICT
- MAKE SURE YOU ARE MUTED UNLESS YOU WISH TO SPEAK.





W2/1099's Library

Network Filter  
VoIP  
EMIS Fiber  
Student Support  
Data Storage Fiscal  
WiFi

# ACCESS COUNCIL

NOVEMBER ASSEMBLY MEETING - 2020

# ASSEMBLY MEETING – November 13, 2020

- **Welcome**
- **Call to Order**
- **Roll Call**
- **Approve Agenda**
- **Approve Minutes of May 2020 Assembly Meeting**
- **Approve October 2020 Financial Reports**
- **Financial Update**
- **Approve Member and Non-Member Fees**
- **Student/EMIS Services**
- **Fiscal Services**
- **Network Services**
- **Adjourn**

# Financials for Approval

Date: 11/03/2020  
Time: 2:53 pm

ACCESS COUNCIL  
Financial Report by Fund/SCC  
October 2020

Page: 1  
(FINSUM)

Fund #	Fund Description	FYTD	MTD	FYTD	Current	Current	Unencumbered	Bank
Begin Balance	MTD Receipts	Receipts	Expenditures	Expenditures	Fund Balance	Encumbrances	Fund Balance	Code
025 0000	COMPUTER NETWORK - DATA ACQUISITION							
446,663.45	425,037.79	1,132,256.95	445,000.01	1,175,935.73	402,984.67	1,274,019.90	871,035.23-	A
025 903F	FIBER NETWORK MAINTENANCE/REPAIRS							
201,150.83	0.00	0.00	0.00	0.00	201,150.83	0.00	201,150.83	A
025 9050	ACCESS ONENET SUBSIDY							
154,801.60	0.00	0.00	20,462.92	104,631.51	50,170.09	18,900.00	31,270.09	A
025 905D	ACCESS DIOCESE STATE SUBSIDY							
71,096.14	818.71	3,624.08	27,825.37	45,296.10	29,424.12	9,288.36	20,135.76	A
025 905E	ACCESS EMIS SUBSIDY							
0.00	3,761.34	9,856.79	947.69	6,095.45	3,761.34	0.00	3,761.34	A
025 905H	COMPUTER NETWORK - HUNTINGTON TRUST							
3,177.05	0.00	0.00	0.00	0.00	3,177.05	0.00	3,177.05	A
GRAND TOTALS:								
876,889.07	429,617.84	1,145,737.82	494,235.99	1,331,958.79	690,668.10	1,302,208.26	611,540.16-	

# FINANCIAL UPDATE – Brian Stidham, Treasurer

- **FY2021 Projections All Funds**

■	Beginning Balance	\$876,889.07
■	Revenues	\$3,141,943.72
■	Expenses	\$3,260,073.55
■	Projected Ending Balance	\$758,759.24

- **Unique to FY2021**

- Fee increase took effect for member districts, students counts are down but the fee increase is projected to get us through until the equipment leases are paid in full in the next couple of years

## Known/Possible Increases to Costs

**Below expenses are typically absorbed by ACCESS not individually billed to districts (Part of bundled-Other Services or general expenses)**

- Student Information Software– 3.5% per year**
- Pole Attachments – fluctuate based upon the public utilities commission**
- Cyber Insurance increased from \$7,609 to \$30,338**
- Pole Transfers/Fiber Maintenance – work by utilities for moves and transfers/new poles increase our costs**
- Security Intrusion product at a cost of about \$25,000 per year**

# Proposed FY22 Menu of Services for Members – No Change

## ACCESS Menu of Services for Members

*Fees are per/ADM (Average Daily membership) per year unless otherwise noted*

Services	<u>FY1999</u>	<u>FY2001</u>	<u>FY2003</u>	<u>FY2006</u>	<u>FY2008</u>	<u>FY2009</u>	<u>FY2010</u>	<u>FY2011</u>	<u>FY2013</u>	<u>FY2016-2020</u>	<u>FY2021+ Adopted 11/2019</u>
Internet/ E-mail	-	\$30.50	\$30.50	\$30.50	\$30.50	31.50	31.50	31.50	35.00	-	
Internet	-	-	-	-	-	-	-	-	-	\$35.00	\$39.00
Other Services	-	\$8.50	\$8.50	\$8.50	\$8.50	\$8.75	\$8.75	\$8.75	\$9.75	\$9.75	\$9.75
All Services	\$19.50	\$39.00	\$39.00	\$39.00	\$39.00	\$40.25	\$40.25	\$40.25	\$44.75	\$44.75	\$48.75
District Cap	-	\$19.50	\$19.50	\$19.50	\$19.50	\$20.00	\$20.00	\$20.00	\$23.00	\$23.00	\$27.00
Per Building Fee	-	-	\$4,000	-	-	-	-	-	-	-	-
Voice over IP	-	-	-	-	\$95/Phone	\$95/Phone	\$70/Phone	\$70/Phone	\$70/Phone	Per Agreement	Per Agreement
Voicemail	-	-	-	-	\$5/ADM	\$5/ADM	\$5/ADM	\$5/ADM	\$5/ADM	Per Agreement	Per Agreement
Dial-up	-	-	-	\$10/Month/ Acct	\$10/Month/ Acct	\$10/Month/ Acct	\$10/Month/ user	-	-	-	n/a
Remote Access	-	-	-	-	-	-	-	\$30/ADM	\$30/ADM	\$30/ADM	\$30/ADM
Hardware Maintenance	-	-	-	Per Agreement	Per Agreement	Per Agreement	Per Agreement	Per Agreement	Per Agreement	Per Agreement	Per Agreement
Fiber Connection	-	-	-	All Costs	All Costs	All Costs	All Costs	All Costs	All Costs	All Costs	All Costs
Wireless	-	-	-	-	-	-	-	-	Per Agreement	Per Agreement	Per Agreement
Virtual Servers and Storage	-	-	-	-	-	-	-	-	Per Agreement	Per Agreement	Per Agreement

# Current Non-Public Fee Schedule

## ACCESS Menu of Services for Non-Members<sup>1,5</sup>

*Fees are per/ADM (Average Daily membership) per year unless otherwise noted*

	<b>FY2007</b>	<b>FY2008</b>	<b>FY2009</b>	<b>FY2010</b>	<b>FY2011</b>	<b>FY2013</b>	<b>FY2014</b>	<b>FY2018+</b>
Internet (T-1) <sup>6, 7</sup>	\$5.00	\$5.00	\$5.15	\$5.15	\$5.15	\$5.75	--	--
Internet (Fiber) <sup>7</sup>	\$30.00 <sup>3</sup>	\$30.00 <sup>3</sup>	\$31.00	\$31.00	\$31.00	\$34.50	\$34.50	34.50
E-mail	\$15.50	\$15.50	\$16.00	\$16.00	\$16.00	\$17.75	\$17.75	17.75
Student Services	\$8.00 <sup>2</sup>	\$8.00 <sup>2</sup>	\$8.25	\$8.25	\$8.25	\$9.15	\$9.15	9.15
ProgressBook/Gradebook	-	-	-	-	-	\$2.50	\$2.50	2.50
IEPAnywhere	-	-	-	-	-	\$1.25	\$1.25	1.25
Fiscal Services	\$6.50 <sup>2</sup>	\$6.50 <sup>2</sup>	\$6.75	\$6.75	\$6.75	\$7.50	\$7.50	7.50
INFOhio	\$4.00 <sup>2</sup>	\$4.00 <sup>2</sup>	\$4.15	\$4.15	\$4.15	\$4.50	\$4.50	4.50
Dial-up Access	\$10/Mo/Acct	\$10/Mo/Acct	\$10/Mo/Acct <sup>6</sup>	\$10/Mo/Acct <sup>6</sup>	-	-	-	-
Remote Access	-	-	-	-	\$35/ADM	\$35/ADM	\$35/ADM	\$35/ADM
Voice over IP	-	\$95/Phone	\$95/Phone	\$70/Phone	\$70/Phone	\$70/Phone	\$70/Phone	\$55/Phone
Voicemail	-	\$5/ADM	\$5/ADM	\$5/ADM	\$5/ADM	\$5/ADM	\$5/ADM	\$5/ADM
Maintenance	Per Agreement	Per Agreement	Per Agreement	Per Agreement	Per Agreement	Per Agreement	Per Agreement	Per Agreement
Wireless <sup>8</sup>	-	-	-	-	-	-	Per Agreement	Per Agreement
Virtual Servers and Storage <sup>9</sup>	-	-	-	-	-	-	Per Agreement	Per Agreement
T-1 Transport Fee <sup>6</sup>	\$5,000 per year <sup>4</sup>	\$5,000 per year <sup>4</sup>	\$5,000 per year <sup>4</sup>	\$5,000 per year <sup>4</sup>	\$5,000 per year <sup>4</sup>	\$5,000 per year <sup>4</sup>	--	N/A
New Fiber Connection	\$15,000 Connection Fee PLUS All Construction Costs <sup>3</sup>	\$15,000 Connection Fee PLUS All Construction Costs <sup>3</sup>	\$15,000 Connection Fee PLUS All Construction Costs <sup>3</sup>	\$15,000 Connection Fee PLUS All Construction Costs <sup>3</sup>	\$15,000 Connection Fee PLUS All Construction Costs <sup>3</sup>	\$15,000 Connection Fee PLUS All Construction Costs <sup>3</sup>	\$15,000 Connection Fee PLUS All Construction Costs <sup>3</sup>	\$15,000 Connection Fee PLUS All Construction Costs <sup>3</sup>
Alternate Network Connection <sup>7</sup>	-	-	-	-	-	-	Per Agreement	Per Agreement

# Proposed FY22 Menu of Services Non-Members - Change

## ACCESS Menu of Services for Non-Members

ACCESS - FY22 Fee Schedule		
Internet via ACCESS Fiber Network (AFN)	\$40.60 per ADM/Yr.	Transport and Bandwidth with Internet Security Solutions - filter and monitoring (CIPA Compliant) E-Rate Eligible
Internet – not using the ACCESS Fiber Network	Per Agreement	Transport and Bandwidth E-Rate Eligible Based on connectivity and bandwidth needs.
<b>Student/EMIS Services</b>		
Student Information	9.60 per ADM/Yr	Student Information System for grade reporting, transcripts, scheduling, attendance, disciplinary action, special education forms and all areas of EMIS reporting.
ProgressBook-Gradebook, Virtual Classroom	2.65 per ADM/Yr	
Data Map	2.85 per ADM/Yr	
IEPAnywhere Special Education	1.55 per ADM/Yr	
<b>Financial Services</b>		
Accounting and Payroll (USAS-R/USPS-R)	\$8.00	Uniform School Accounting System – Redesigned (USAS-R) and Uniform School Payroll System - Redesigned (USPS-R). These are state-written fiscal packages that meet state standards.
Employee Kiosk	\$1000.00 per year	
RAM	\$1000.00 per year	
<b>Library Services</b>		
INFOhio Library Services	5.00 per ADM/Yr	Statewide automated library system for the K-12 levels. This includes a statewide Union Catalog listing all materials found in any INFOhio library. <a href="http://infohio.org">http://infohio.org</a>
SORA/Overdrive E-Book Consortium	1.10 per ADM/Yr	E-Book shared collection through SORA/Overdrive
<b>** MINIMUM FEE:</b> There is a \$7,500 minimum for fees if <b>*ANY*</b> application service is purchased, with the exception of Internet access and e-mail.  For example, if a customer would like to purchase Financial Services, but only has 150 ADM, the calculated price would be \$1,200 (\$8 * 150), but a minimum fee of \$7,500 per IRN would apply. However, if the customer is only purchasing Internet and/or e-mail services, the minimum service charge does not apply.		
<b>NETWORK SERVICES</b>		
<b>E-Mail Services</b>		
Managed Email with Email Archiving	\$18.75 per ADM/Yr.	E-mail address and mailbox for all students, teachers, and staff. SPAM filtering and anti-virus protections Email Archiving included.

## Non-Member FY22 - continued

<b>Voice Services</b>		
Voice over IP	Per Agreement	Cost calculated on volume and will be quoted accordingly. Provides for VoIP services from central ACCESS location
Voicemail/All Call/ Bully Tip Line	Per Agreement	Service includes All Call capabilities as well as other enhanced features.
PRI/SIP Services	Per Agreement	Based on Call Volume
<b>Technical</b>		
Network Maintenance	Per Agreement	Network Infrastructure Support
Remote Backup Services	Per Agreement	Based on backup needs and capacity
Hosted Active Directory Services	Per Agreement	Depending on volume, licensing and migration needs
Hosted Wireless	Per Agreement	Wireless network services will be priced depending on district size and density requirements
Virtual Servers and Storage	Per Agreement	Virtual servers and storage will be priced depending on the number, size, and resources required.
<b>CONSTRUCTION/CONNECTION – TO ACCESS FIBER NETWORK</b>		
New Fiber Connection	Connection Fee of \$15,000 PLUS all Construction costs. Connection Fee determined based on project.	Fiber connections will be allowed for all current connections plus any other educational entity. New connections by non-member entities will be subject to a \$15,000 one-time connection fee. This connection fee may be split into a maximum of three annual payments if requested by the connecting entity. The connecting entity will also pay all costs relating to the physical connection of the fiber to the entity, including all construction, make-ready, and splicing/termination of fiber strands. Connecting entity will also be responsible for an increased per-ADM charge for Internet services for fiber connectivity.

**NOTE:** A Snapshot of school ADM is taken each year to be used in the calculation of fees.

# Student/EMIS

## **New Harmony Reports**

- Contact Tracing Staff
- Contact Tracing Student

## **ODE Statewide Longitudinal Data Systems (SLDS) Grant**

- Early Warning System towards Graduation
  - Adds two EMIS reporting collections
    - Grades
    - Non-Graduate CORE

## **FY21L - Staff and Course EMIS Collection**

## **Accessibility Compliance (Office of Civil Rights)**

- ParentAccess - Done
- Beginning work on other areas of the ProgressBook Suite



# Fiscal Services

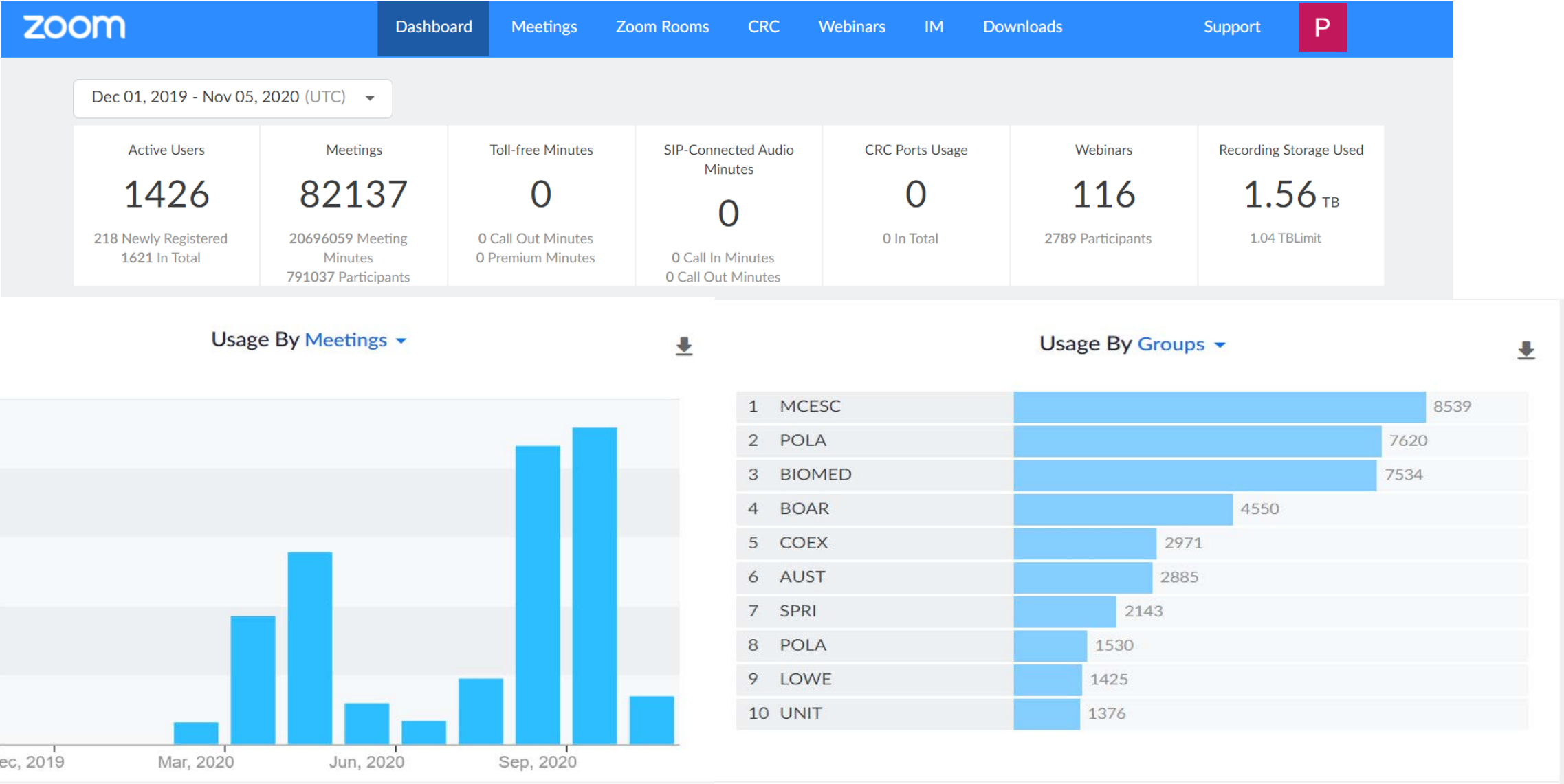
- Beginning the final wave of migrating districts to the Redesign Software January 2021-June 2021
- Permission to add a couple districts was granted to finish off our migrations with eight going in this last ACCESS Wave
- Trainings continue on a quarterly with next sessions beginning in February
- All districts should be on the redesign software by fiscal year end
- Migrations continuing across the state with all districts planned to be off classic by the end of 2022

# ACCESS FIBER UPDATES

- **Fiber Update – Current Projects**
  - **Horizon Overlash Project – Ongoing**
  - **ODOT Construction Projects – Culvert repairs, etc. - Ongoing**
  - **Pole Transfers – Storms, constructions, etc. - Ongoing**
  - **Boardman Stadium - Completed**
  - **Columbiana County EOC – Completed**
  - **Ursuline High School- Completed**
  - **Community Literacy Workforce and Cultural Center – Completed.**
  - **Columbiana County Port Authority Offices - Connected**
  - **Community Action Agency of Columbiana County - Scheduling**
  - **Sebring Stadium – Completed**
  - **Potential Development School – Scheduling**
  - **Cardinal Mooney – In discussion**



# Network Services (ZOOM) <https://www.access-k12.org/zoom>



Thank you for attending!

Next Assembly Meeting  
April, 2021

## ACCESS Council

493 Bev Road, Unit 1  
Boardman, Ohio 44512  
330-702-7860

<http://www.access-k12.org>